

LKPR/PRG
RUZYNE

20 APR 12
10-2B
EFF 3 May

PRAGUE, CZECH
RNAV STAR

ATIS
122.15

*RUZYNE
Radar (APP)
119.0

Apt Elev
1247'

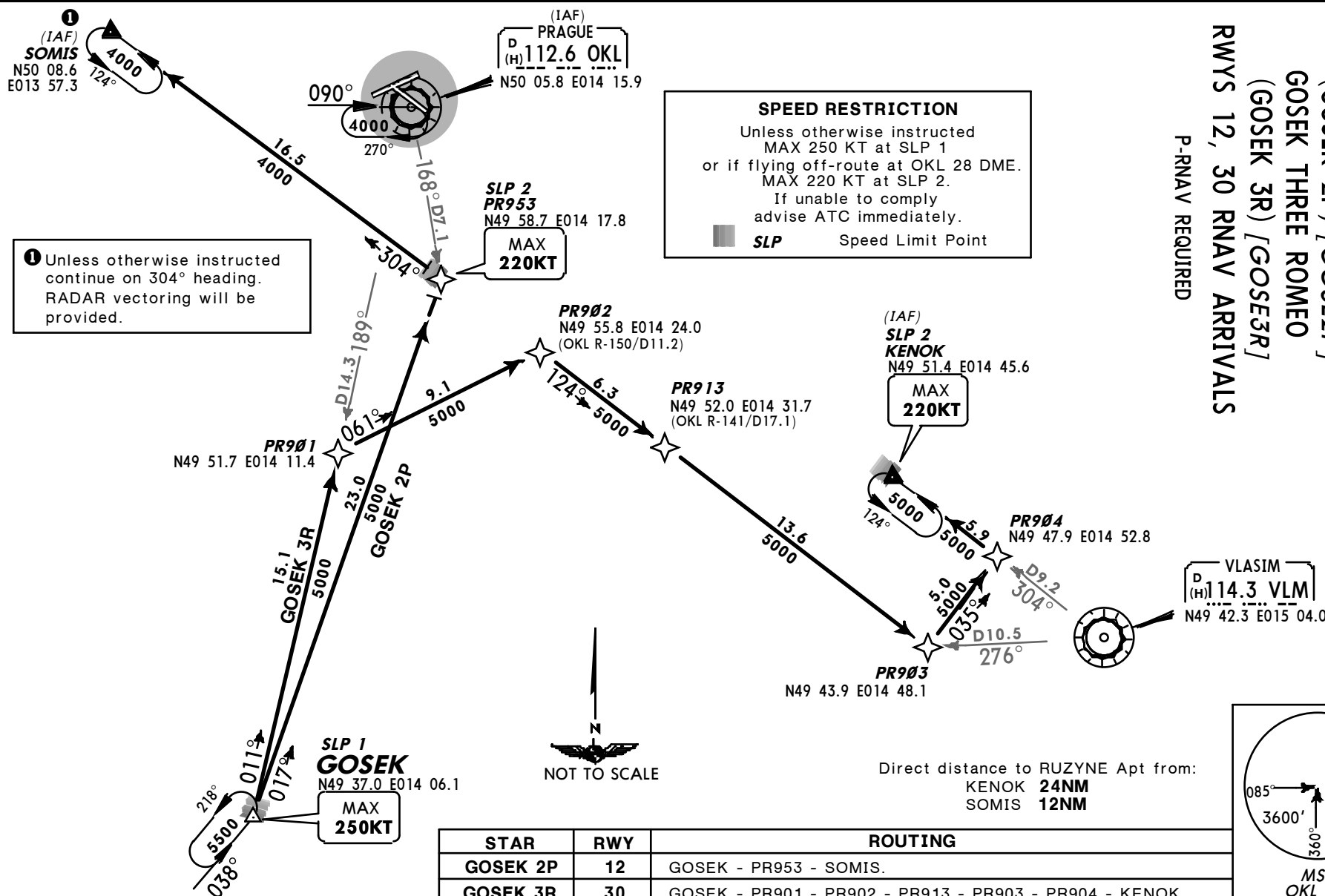
Alt Set: hPa (MM on request)
Trans level: By ATC Trans alt: 5000'
At initial contact with RUZYNE Radar state only call sign.

GOSEK TWO PAPA
(GOSEK 2P) [GOSEK 2P]
GOSEK THREE ROMEO
(GOSEK 3R) [GOSEK 3R]
RWYS 12, 30 RNAV ARRIVALS
P-RNAV REQUIRED

SPEED RESTRICTION

Unless otherwise instructed
MAX 250 KT at SLP 1
or if flying off-route at OKL 28 DME.
MAX 220 KT at SLP 2.
If unable to comply
advise ATC immediately.

SLP Speed Limit Point



STAR	RWY	ROUTING
GOSEK 2P	12	GOSEK - PR953 - SOMIS.
GOSEK 3R	30	GOSEK - PR901 - PR902 - PR913 - PR903 - PR904 - KENOK.